

GTR™ 230

PERFORMANCE

Accessible power and performance.




 Eclipse Black and Reef Blue

Rotax® 1630 ACE™ - 230

GTI® Hull

BRP Audio - Premium System (optional)

CAPACITY

Rider Capacity	
Weight Capacity	600 lb / 273 kg
Fuel Capacity	18.5 US gal / 70 L
Glove Box	2.3 US gal / 8.8 L
Front Bin	38 US gal / 144 L
Storage Capacity Total	40.3 US gal / 152.8 L

DIMENSIONS

Length (bumper to bumper)	130.7" / 332 cm
Width	49.2" / 125 cm
Height	44.9" / 114 cm

HULL

Type	GTI Hull
Material	Polytec™

FEATURES

- Seat strap
- iBR® - Intelligent Brake & Reverse*
- RF D.E.S.S.™ key
- Wide-angle mirrors
- Handle grips with palm rest
- Footwell carpets
- Tow hook

ROTAX ENGINE 1630 ACE - 230

Horsepower	230 hp
Intake System	Supercharged with external intercooler
Displacement	1,630 cc
Cooling	Closed-Loop Cooling System (CLCS)
Reverse System	Electronic iBR
Fuel Type	87 octane
Throttle System	iTC™ (Intelligent Throttle Control)
Exhaust System	D-Sea-Bel™ system

GAUGE

Type of Gauge	4.5 in. digital display
Main Functions	<ul style="list-style-type: none"> • Speedometer • RPM • Clock • VTS™ • Fuel autonomy • Vehicle hours
iTC System - Mode	Eco*, Sport, Speed Regulator & Slow Speed Mode

WEIGHT

Dry Weight	776 lb / 352 kg
	796 lb / 361 kg (with sound system)

WARRANTY

BRP limited warranty covers the watercraft for one year.

*Electronic brake, neutral and reverse.

Key Features

- VTS (Variable Trim System)
- Large front storage
- Watertight phone compartment
- LinQ® attachment system
- Large swim platform
- Ergolock™ two-piece touring seat



 Eclipse Black and Reef Blue

Feature Highlights



BRP Audio - Premium System (optional)
A factory-installed, truly waterproof Bluetooth® audio system for an extra dose of fun and entertainment on the water.



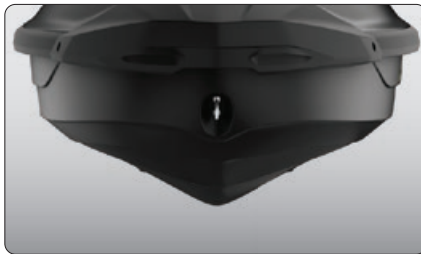
VTS (Variable Trim System)
Provides handlebar-activated settings so riders can easily find the ideal trim for varying conditions.



Swim Platform with Integrated LinQ System
Exclusive quick-attach system on the largest swim platform in its category that allows for easy installation of accessories.



Rotax 1630 ACE - 230 Engine
This powerful engine comes standard with a supercharger and external intercooler. It is optimized to run on regular fuel, which lowers fuel costs.



GTI Hull
This moderate V-shaped hull guarantees a stable, enjoyable ride in variable water conditions. Confident, predictable handling but incredibly playful when you want it to be.



Large Front Storage
An impressive 38 gallons of sealed storage space allows riders to safely stow belongings while riding.¹

¹The removable storage bin organizer is not included.